



Bowland | Fitting Instructions

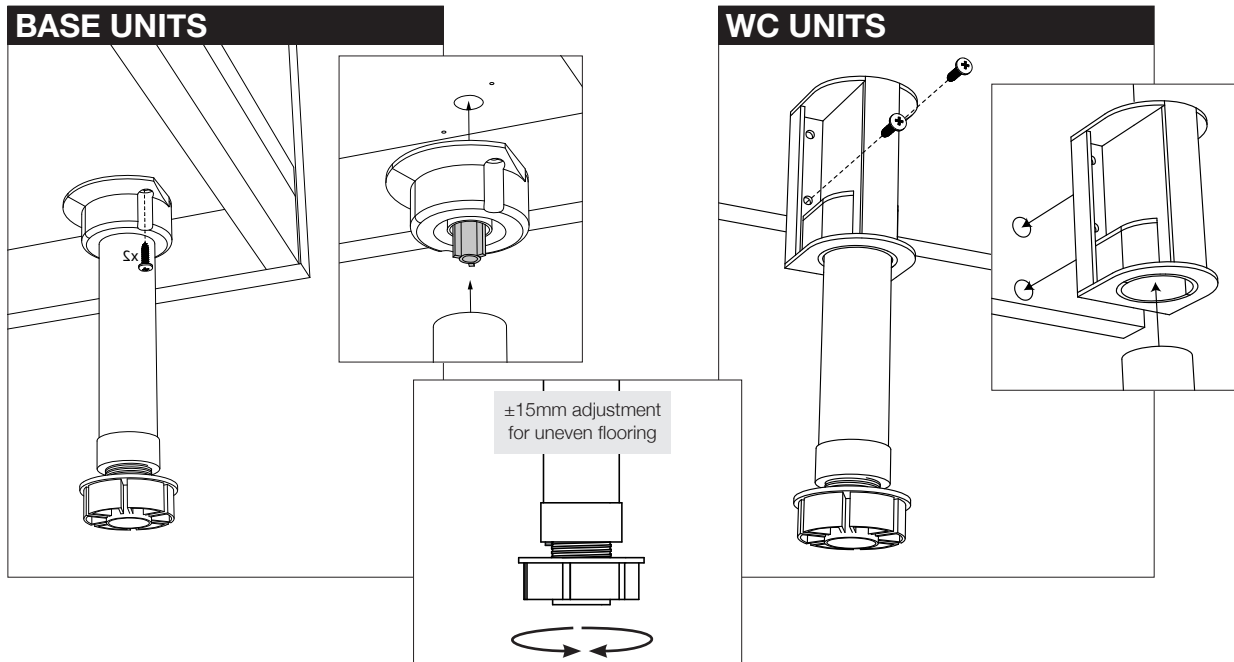
Calypso Bathroom Furniture

BLFI



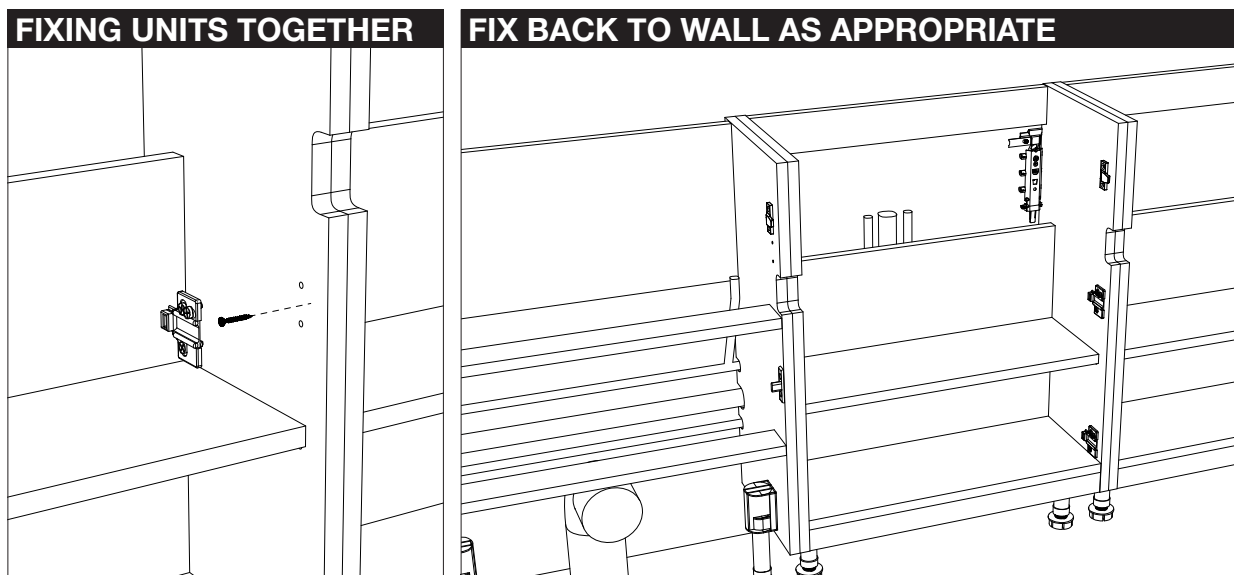
Remove all base units from packaging and remove any drawers.

Fit legs to underside of each unit and stand them against the wall in the position they are to be installed.



Before joining any units together in a run we recommend cutting around any pipework as required.

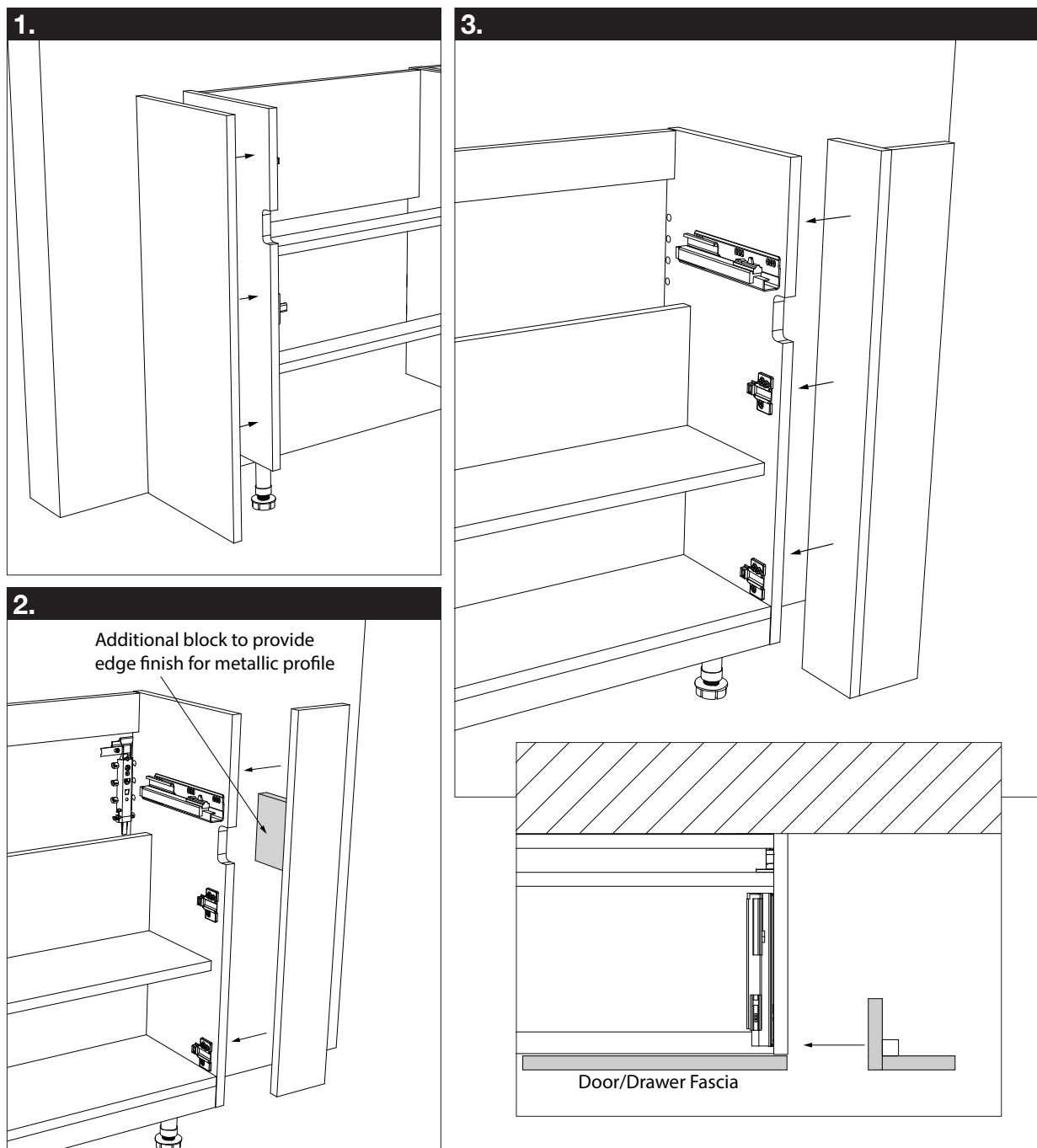
Fix units in a run together using screws hidden behind hinge positions or drawer runners. Make sure all units are level and upright.



All runs of units will be finished either with an end clad or infill panel.

End clads reach the floor and we recommend infill panels are cut to finish flush with the bottom of the door or drawer unit leaving the plinth to run through to the wall. (A further option using floor reaching panels is also shown).

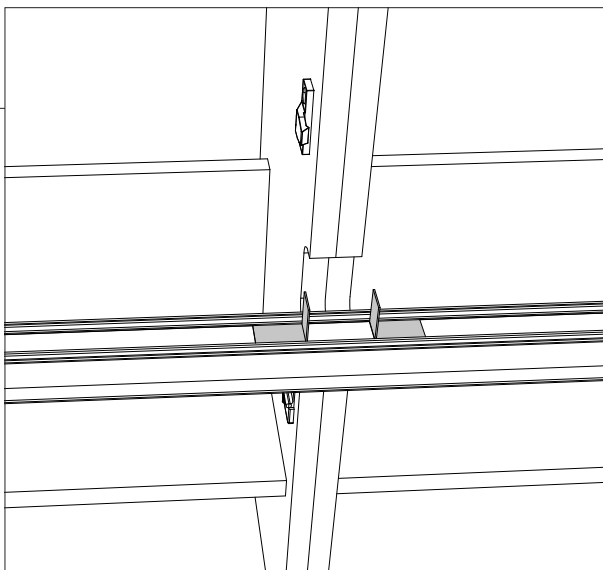
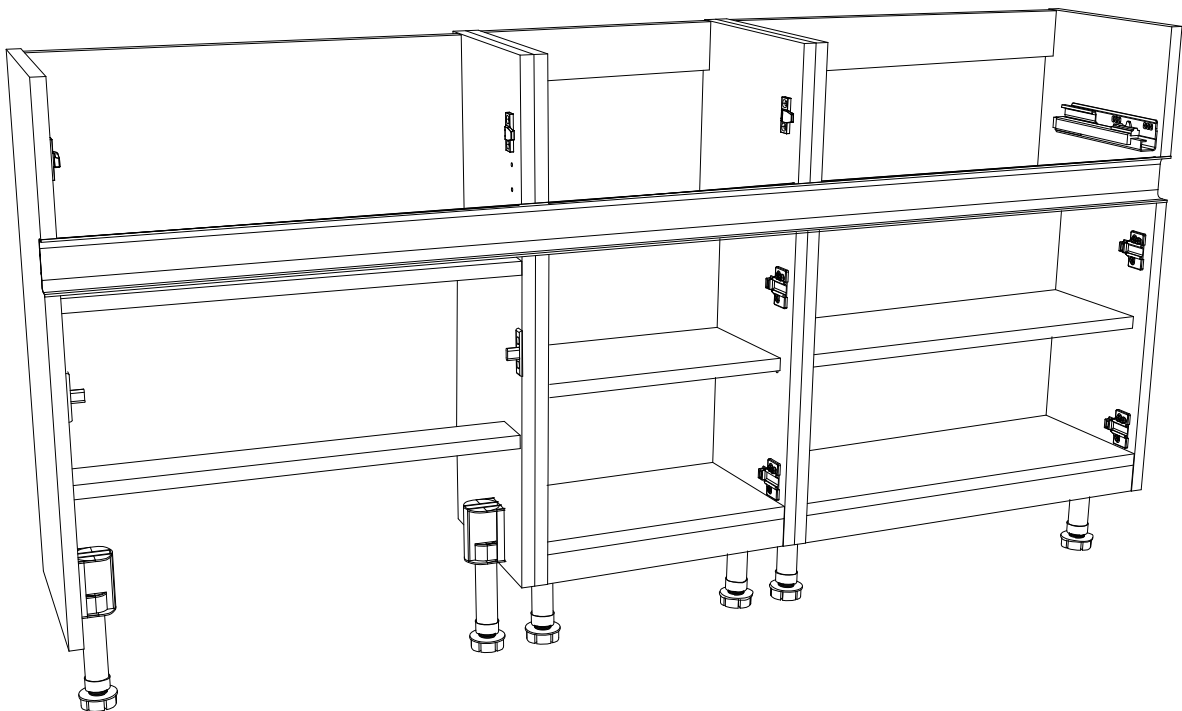
1. End clad on exposed run ends.
2. Infill panel to wall, flush with bottom of carcass allowing the plinth to run through.
3. L-Shape infill to floor.



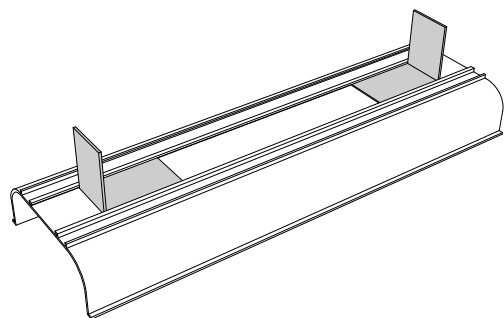
Profiles are supplied in lengths of 1250mm or 2500mm.

The profile should be cut to overall length of the run of carcasses - that is, between end clads and/or infill.

CUTTING PROFILES FROM CARCASS OUTER EDGES

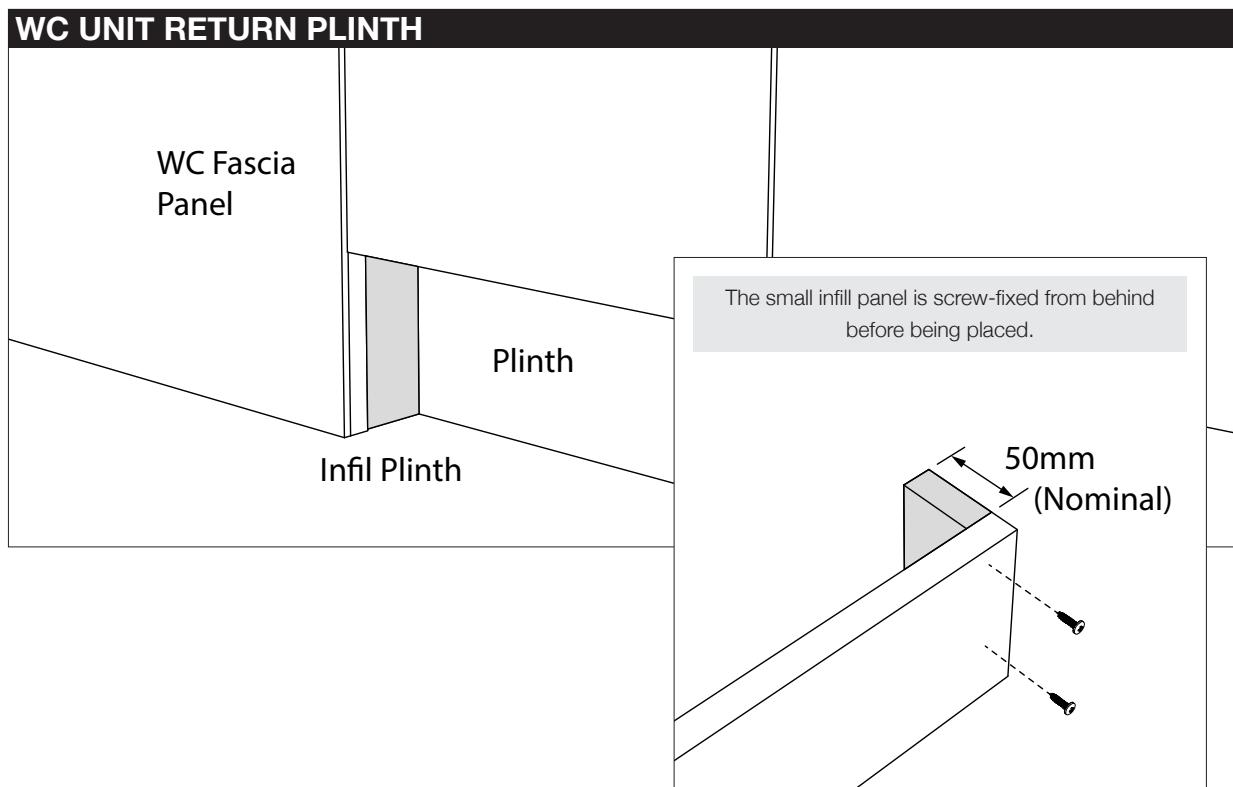
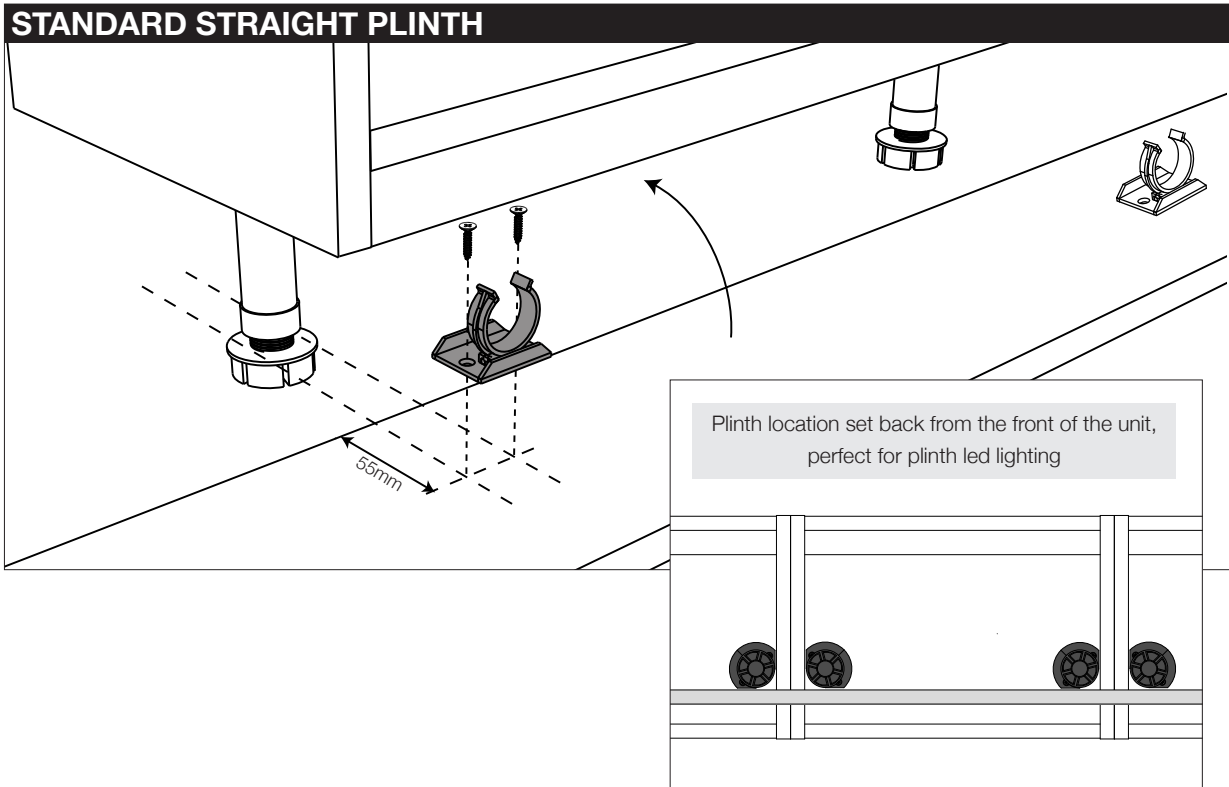


The profile can be secured to the carcass with clips which slot into the rear of the profile

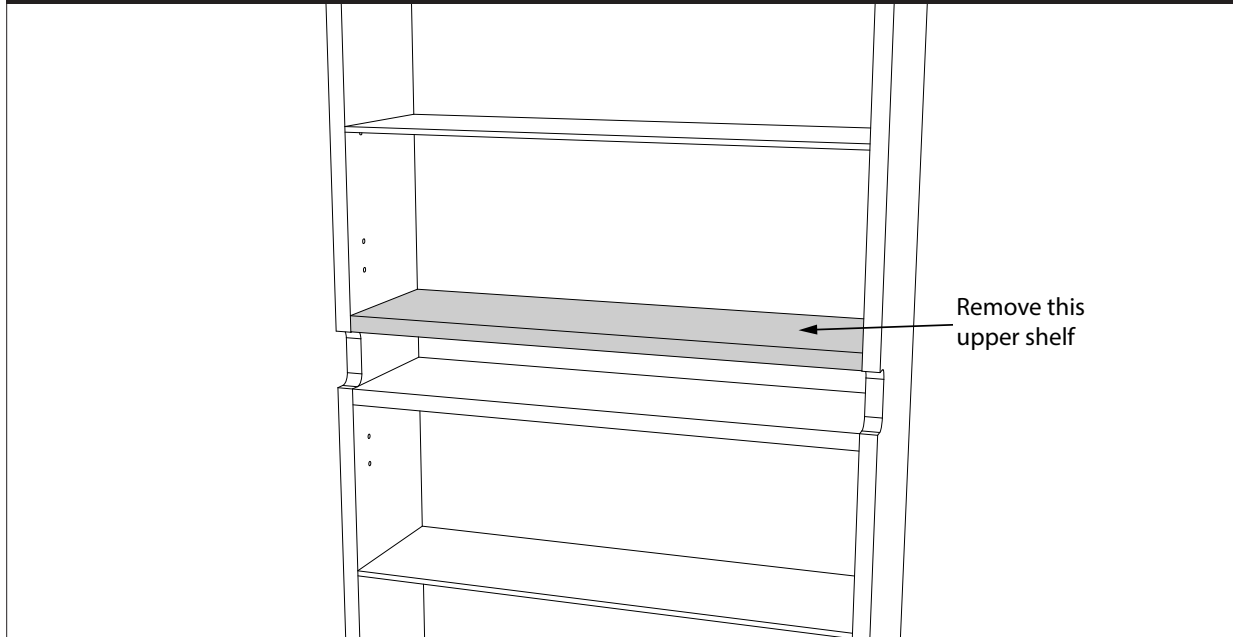


Plinths should be measured and cut to fit between cladding panels or walls.

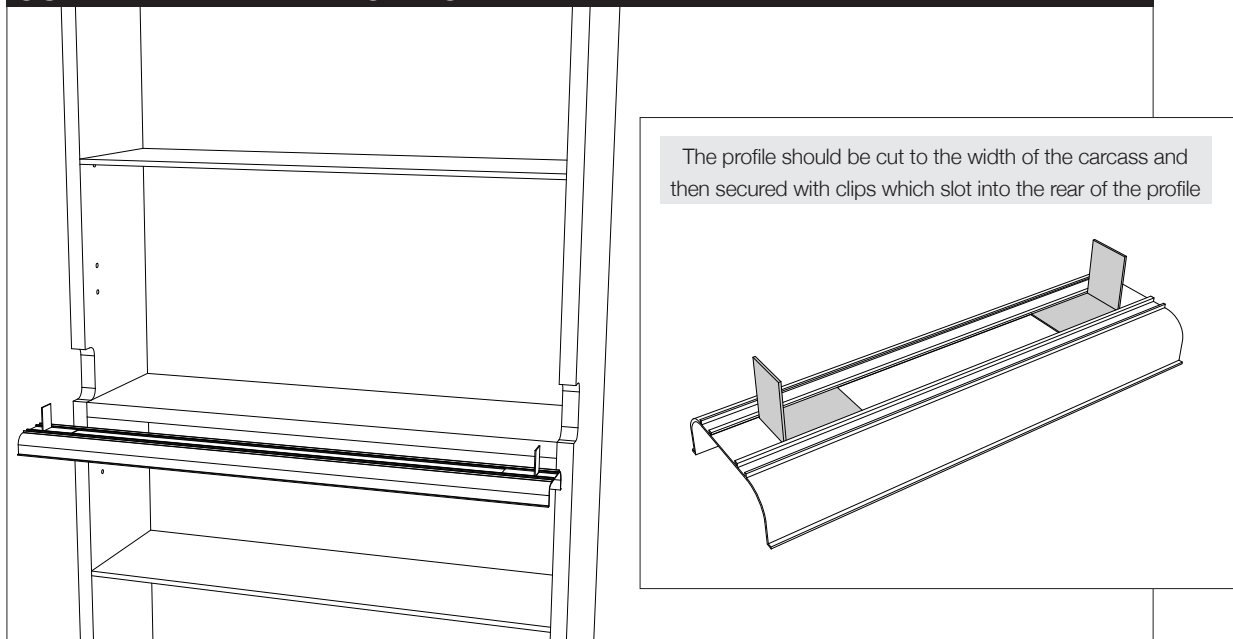
If there is a WC Unit in the run, the plinth will stop either side of the unit and will require a small infill plinth to be cut and fitted behind the WC lower panel.



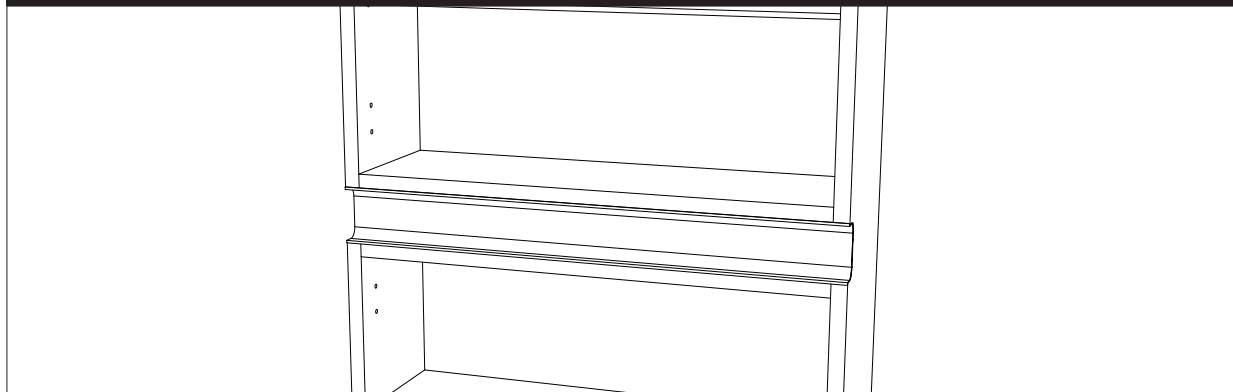
REMOVE SHELF



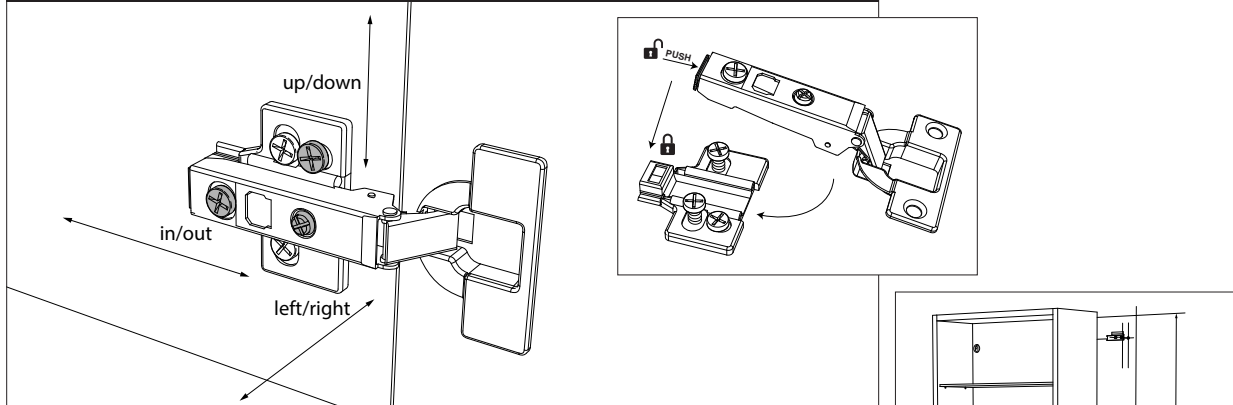
CUT AND FIT METALLIC PROFILE



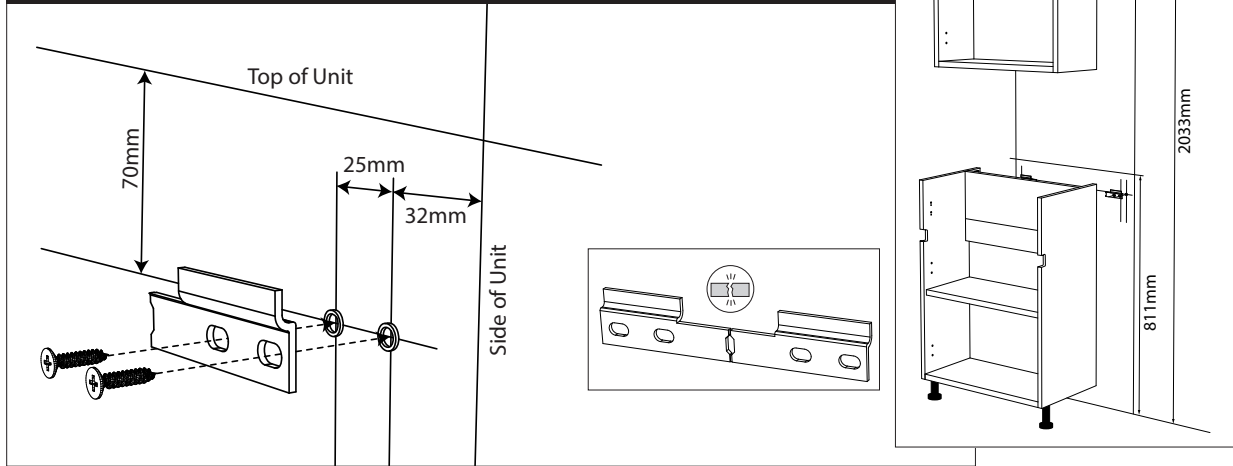
RE-FIT SHELF



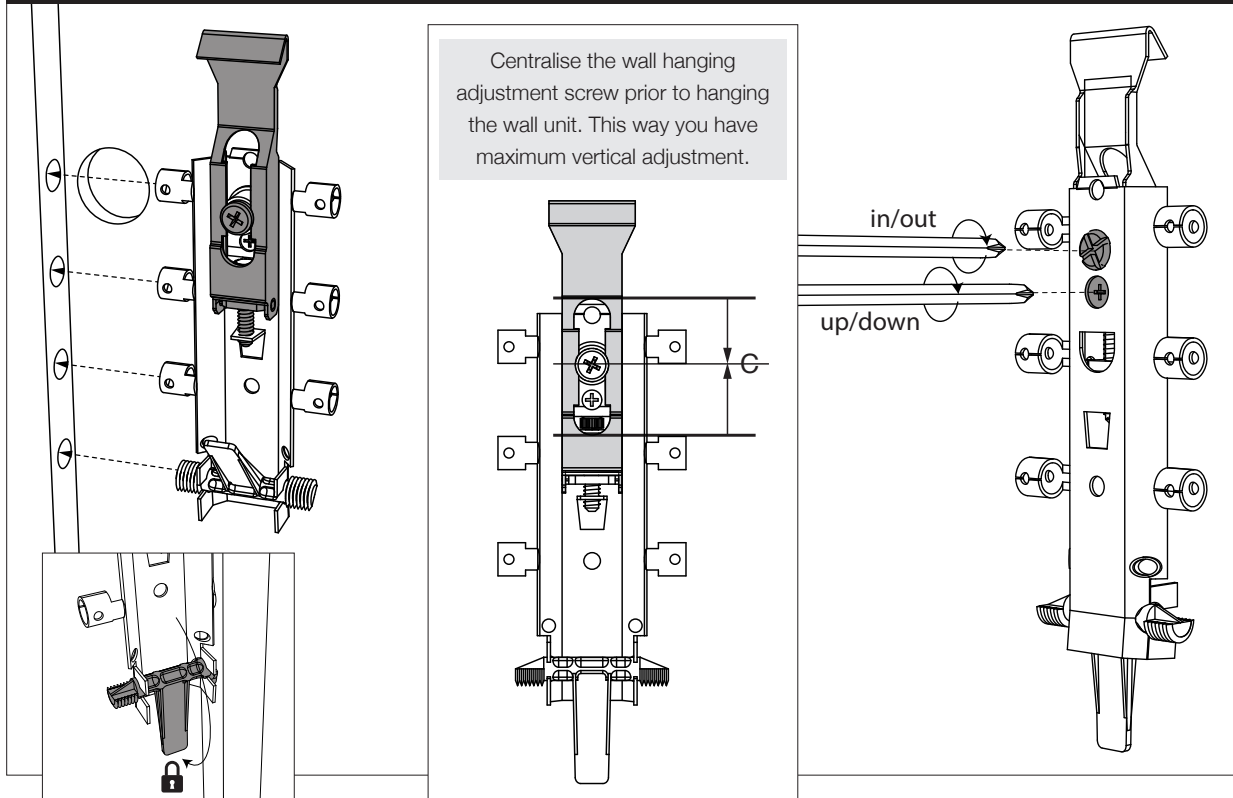
SOFT CLOSE HINGE ADJUSTMENT



HANGING PLATES

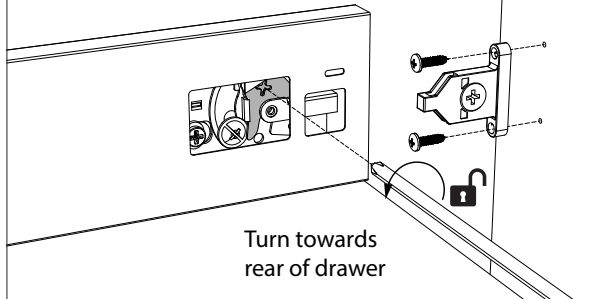


HANGING BRACKETS & LEVELLING

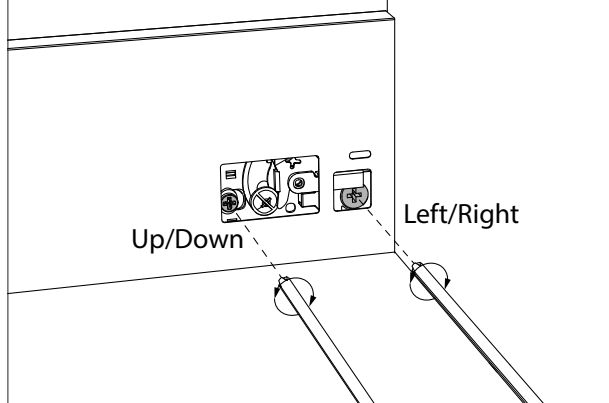


TOP HAT & FASCIA ATTACHMENT

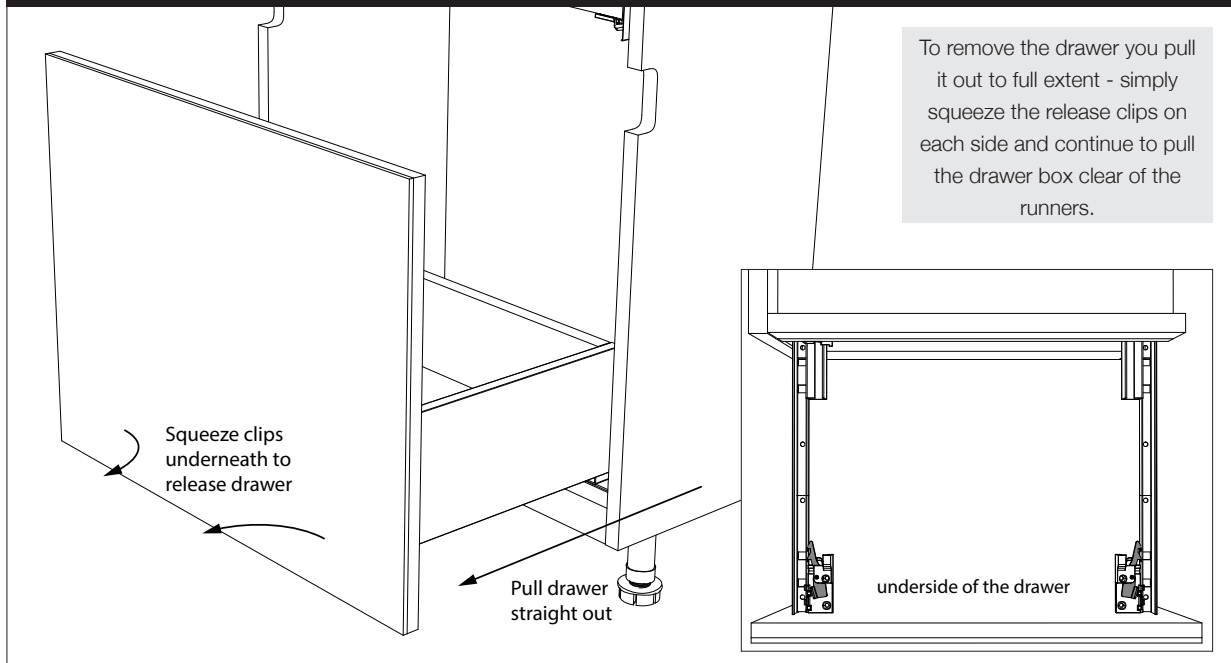
You will find the 'top hat' within the drawer box side.



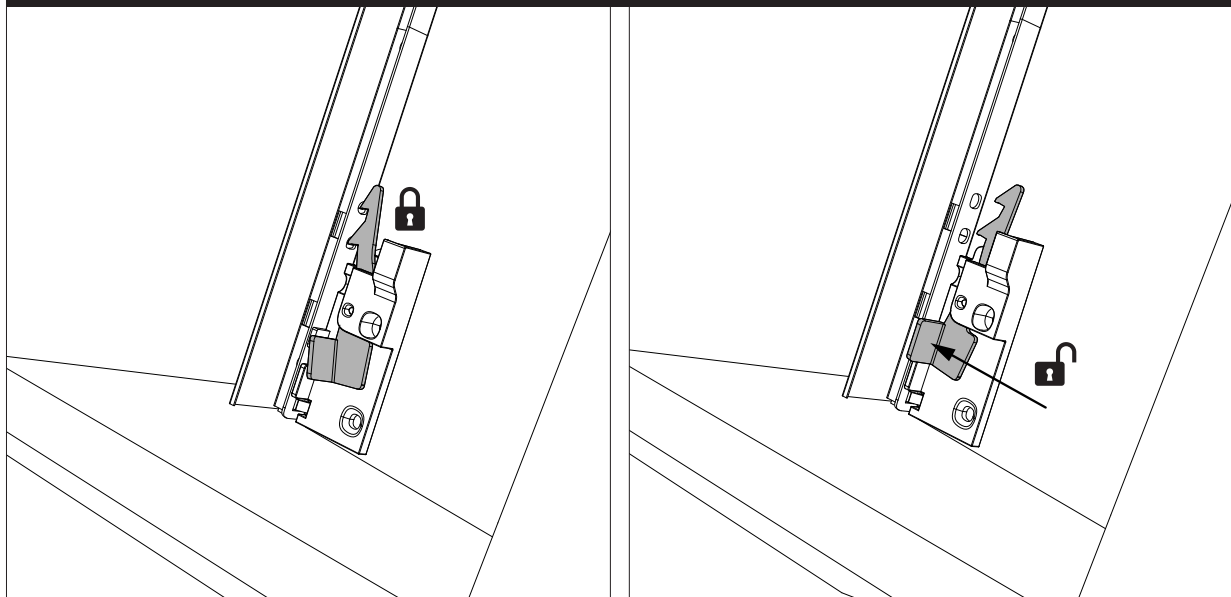
DRAWER ADJUSTMENT



DRAWER REMOVAL & REPLACEMENT

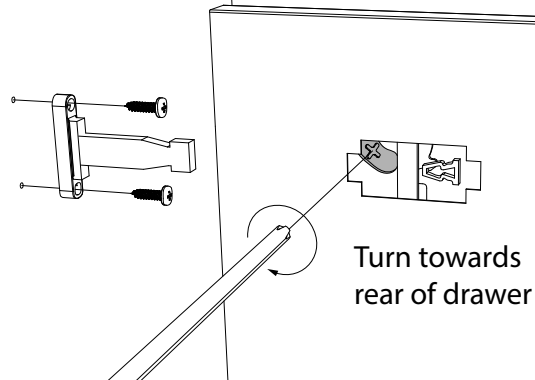


DRAWER REMOVAL & REPLACEMENT (UNDERSIDE OF THE DRAWER)

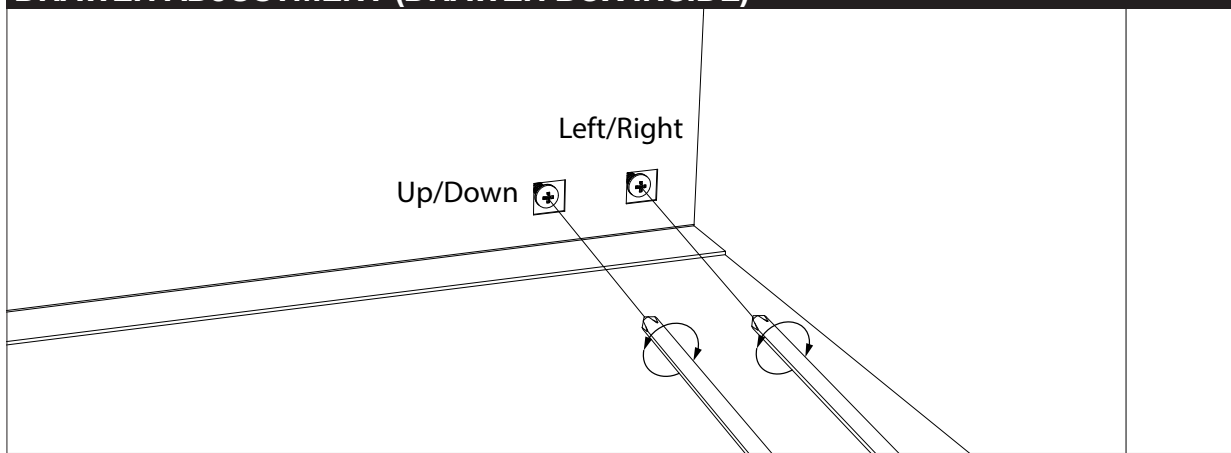


TOP HAT & FASCIA ATTACHMENT (DRAWER BOX OUTSIDE)

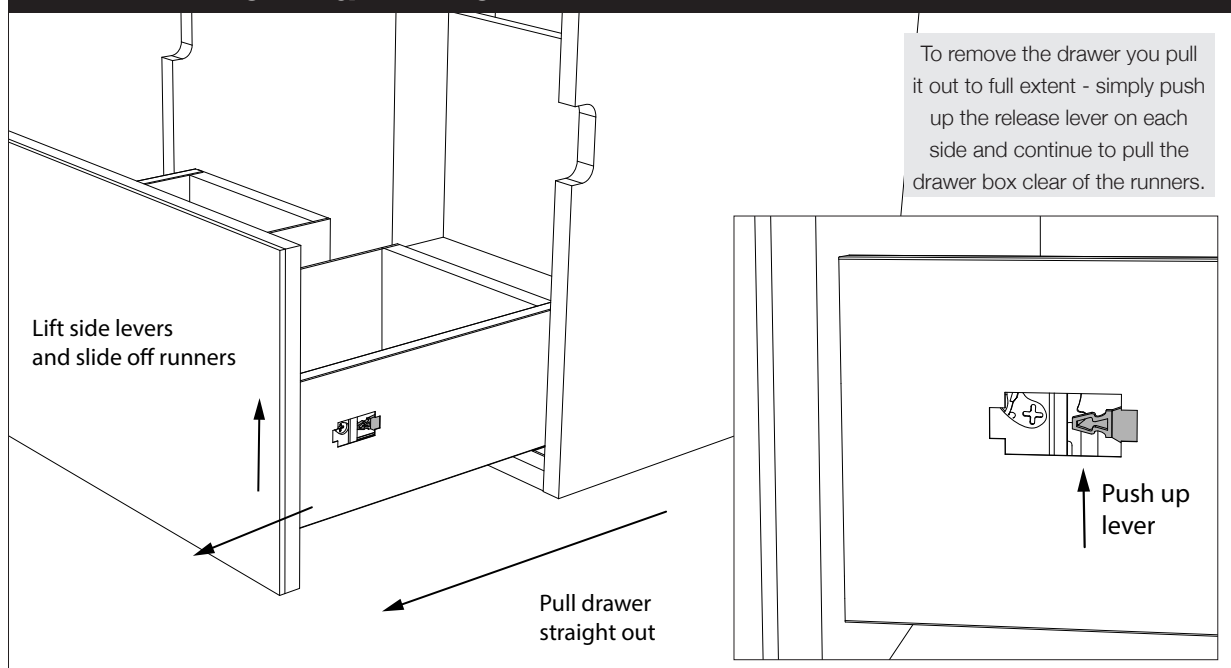
You will find the 'top hat' within the drawer box side.



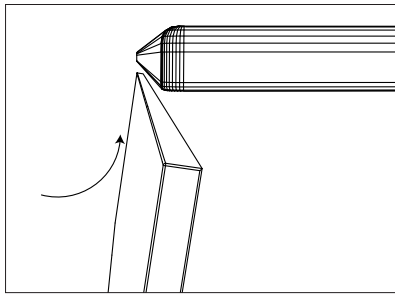
DRAWER ADJUSTMENT (DRAWER BOX INSIDE)



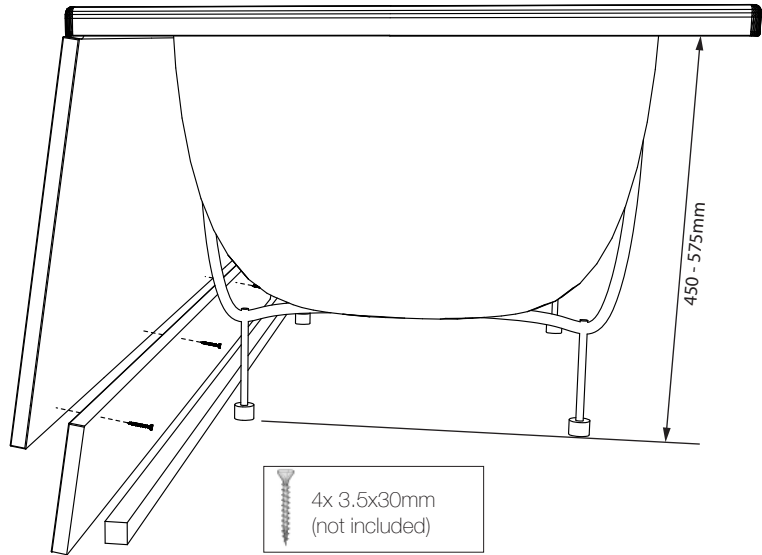
DRAWER REMOVAL & REPLACEMENT



BATH PANELS



Place bath panel lip under bath and locate in place, push until the plinth rests on the installed floor batten. Repeat the process if installing the end panel.



WORKTOPS

Vinyl, Oak and Postformed Worktop joints should be machined with a router using a worktop jig, and glued with a suitable adhesive and worktop bolts. Silicone or Worktop Brackets (3137) can be used to fix these worktops to the base units. ALL CUT AND EXPOSED EDGES ON THESE WORKTOPS MUST BE SEALED.

Calypstone is an acrylic based product with all the practicalities of a hard wood, meaning it can be cut using common woodworking tools. A jigsaw with a good quality blade is ideal for initial cuts and should always be approached from the front profile of the worktop, ensure any off cuts are well supported.

Silicone can be used to set Calypstone worktops on to the base units. We recommend using our jointing compound when joining two pieces of Calypstone.

CALYPSSTONE INSTALLATION

All material should be given time to reach room temperature prior to installation (24 hours). This is especially important for adhesives & silicones as environmental temperature affects the curing time for the adhesive, and room temperature allows for consistent performance.

CALYPSSTONE bathroom surfaces have all the practicality of hardwood in that common woodworking tools can be used to cut & shape the solid surface. While CALYPSSTONE is harder than wood and laminate it does not require specialist tools.

BOWL CUT OUTS & TAP HOLES – Please read ALL the instructions below before you start.

Use a good quality jigsaw blade or a router cutter with a new, sharp tungsten or hard point tipped blades. Use masking tape to prevent scratching or marking the surface with the cutter base plates. Do not force the cutting process, apply a slow, even and constant pressure letting the cutter slowly lead the cut.

NOTE: ALWAYS SUPPORT THE OFF-CUT TO STOP IT BREAKING AWAY AS YOU NEAR THE COMPLETION OF THE CUT.

Semi-Recessed Bowls: If using a router, we recommend making 2 cuts, go halfway through on the first cut then break through on the second. ALWAYS cutting INTO the front edge profile.

Full Inset Bowls: Use the bowl template to create a jig, drill the starting point hole and router out using 2 passes. The 1st router cut to at least half way through, then complete the cut with the 2nd pass.



Bowland | Fitting Instructions

Fitting Calypstone Worktops

CALYPTSTONE INSTALLATION (CONT)

Use a 200-grit sand paper to obtain a smooth finish around the cut-out edge.

A thin bead of silicon may be applied around the bowl on completion to prevent water seeping through and into the base unit. Water will not affect the CALYPTSTONE surface as it is a solid acrylic-based material and is completely impervious to water ingress.

Tap holes: Drill out using a flat drill bit or hole cutter.

STRAIGHT CUTS – Please read ALL the instructions below before you start.

DO NOT CUT OUT THROUGH THE FRONT PROFILE AS CHIPPING OR BREAKOUT MAY OCCUR. ALWAYS CUT INTO THE FRONT PROFILE EDGE.

For a Joint: Clamp a straight edge guide to the surface to help keep the cut straight. Do not force the cutting process but apply a slow, constant and even pressure to the router letting the cutter lead - INTO THE FRONT EDGE. With a sharp tool apply a series of scratches to key the edge ready for jointing being careful not to damage the clean cut straight top edge. Clean the edge with Isopropyl Alcohol or similar and allow to dry.

Finished or Show End: Cut as above then router or sand a 3mm top and bottom radius to the show-end to match the front edge top and bottom profile. Start the sanding process with a 240 grit, 320 grit, then a 500-grit soft finishing pad. Restore to the original finish by applying CALYPTSTONE finishing compound and buffing clean with a clean dry cloth. Finally apply a wax free polish.

NOTE: ALWAYS SUPPORT THE OFF-CUT TO STOP IT BREAKING AWAY AS YOU NEAR THE COMPLETION OF THE CUT.

PROFILED EDGES

Because the CALYPTSTONE surface is made from a solid modified acrylic you can give it a unique look by routing a different profile edge. This is a simple process, but we recommend a minimum 1.75kw powered router with a 12.7mm collet and carbide tipped cutters.

JOINING CALYPTSTONE

We recommend using mini butt & mitre bolts (mini Zipbolts), with a solid surface jointing compound. Jointing biscuits can also be used but are not essential. Joints can also be satisfactorily made manually using a good contact adhesive or jointing compound on it's own. Calypso jointing compound is available in: **Off White - 3252 | Dark Grey - 3253 | These also require a dispenser - 3250**

Complete any cuts as per instructions above, and ensure both edges have been keyed ready to accept the adhesive. Apply masking tape to both surfaces that are to be joined close to the joint. The smaller the gap you leave for adhesive squeeze out, the better for sanding and cleaning later. Do not over-fill the joint with adhesive as too much will hinder the joint finishing process and leave a visible line. Tighten the bolts or squeeze the tops to bring the two surfaces together. **DO NOT OVER-TIGHTEN.**

Wipe away excess adhesive and leave until fully cured. Remove the masking tape before starting the sanding process for which we recommend using a Random Orbital Sander.

The sander should first be used horizontally, then with a vertically straight action. Do not use in a circular motion nor apply too much pressure or sand for too long a period as this can cause heat build-up which will leave dull patches or cause blooming.

Maintain sanding at a slow and even pace to ensure a uniform finish.

Use good extraction to keep dust from the surface, and frequently check that sanding pads have not clogged up as this will hinder consistent performance.

- 1) Start with a 150 grit
- 2) Next 240 grit
- 3) Next 320 grit
- 4) Next with 500 grit soft finishing pad
- 5) Blend the join in with CALYPTSTONE polishing compound applying with a clean dry cloth.
- 6) Complete the process by polishing with a wax free polish.

Sanding Tip: Keep the sanding area as narrow as possible to either side of the joint and blending in with the rest of the top. It may be necessary to sand the whole top with a 500 grit finishing pad.



CARE & MAINTENANCE

CALYPTSTONE worksurfaces are easy to clean and maintain. By following our simple care instructions, the beauty of your worktops can be preserved, and your bathroom will retain that 'just installed' look throughout its life.

Routine Cleaning: Wiping your CALYPTSTONE surface with a warm damp cloth and then buffing with a soft dry cloth will keep your surface in pristine condition.

Care and Maintenance: Avoid exposing CALYPTSTONE surface to strong chemicals such as nail varnish remover or paint removers etc. These should be removed immediately. Any residue and spills from shampoo, toothpaste, mouthwash or similar, should be cleaned immediately with soapy water to ensure no staining occurs. Always avoid sliding hard/sharp objects such as cups, bottles or cans across the surface as these will result in scratches. If staining or scratches do occur, CALYPTSTONE maintenance or repair kits can be used to remedy them.

IMPORTANT: CALYPTSTONE IS A MAN MADE ACRYLIC AND POLYESTER SURFACE AND WILL SHOW SCRATCHES, PARTICULARLY ON DARK COLOUR SURFACES, BUT ALL SCRATCHED SURFACES CAN BE SANDED BACK TO THE ORIGINAL FINISH

Scratches and Refinishing: Day to day scratches and marks can easily be sanded and buffed out.

Light Scratches: The CALYPTSTONE Maintenance kit contains all you need to be able to polish out light scratches on your bathroom worktop. Instructions are included.

Deeper Scratches: The CALYPTSTONE Repair kit contains all you need to be able to repair & polish out deeper scratches on your bathroom worktop. Instructions are included.

More Serious Damage: Because of the inherent qualities of CALYPTSTONE solid surface worktops, they are capable of being repaired. This means that the surface can be returned to its original condition even after suffering severe impact, heat or chemical damage.

Please contact your CALYPTSTONE supplier for professional advice on the best course of action for the more serious repairs.

7470.03 Calypstone Maintenance Kit



7470.04 Calypstone Repair Kit



CARING FOR YOUR FURNITURE

By following some simple care and cleaning guidelines, Woodstock furniture can be expected to give many years trouble free service.

All water spills, standing water and sprays **must** be wiped clean and mopped dry immediately. If left on a surface, water will cause damage.

On completion of installation, all sawdust must be removed from the units, and drawer runners inspected carefully with any dirt or grit being removed to ensure a smooth running action prior to full use.

Calypstone worktops can be kept in prime condition with the use of one of our Calypstone Care Kits which can be purchased from your Calypso Bathroom Furniture dealer.

Never use chemical or abrasive cleaners, bleach or furniture polishes on any bathroom furniture as the finish can be affected. Clean only with a soft damp cloth and a mild soap solution as necessary.

Solid Oak is a very hard-wearing material and its looks are enhanced with wear over the years. Occasional application of a wax-based furniture polish should be all that is needed to maintain its finish.

DO NOT USE household cleaners or abrasive powders on oak, and remove any spills or stains immediately with a soft damp cloth and mild detergent (washing-up liquid). Excessive moisture or water spills will darken the oak surface.

